

HIGH FLOW SELF-PRIMING VANE PUMP FOR DIESEL TRANSFER



EQUIPCO[®]

INNOVATIONS IN FUEL HANDLING

www.equipco.com.au

1800 813 182

European
Made
Quality

ALUMINIUM

FLANGE CONNECTION

ANTI-FLOODING



- **High volume** Diesel transfer self-priming vane pump.
- **Max flow 200 LPM.**
- Single phase **2.2 kw Motor**
- Ideal pump for volume transfer with hose reels for **Marina or large earthmoving equipment.**
- Manufactured in **Italy.**

- Self-priming vane pump, powered by 230V AC motor.
- High quality aluminium pump body with cast iron liner, shaft triple bearings support and low engine rpm ensures long-lasting performance.
- Equipped with exclusive fluid transfer optimization system which increases efficiency and performance while reducing noise.
- Diesel only

Code: TP855-200



bearings



THERMAL PROTECTOR
AUTO-RESET



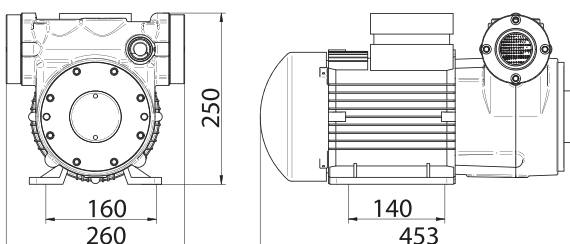
1 bar PRESS
190
LT/MIN

inlet
FILTER
130 µm

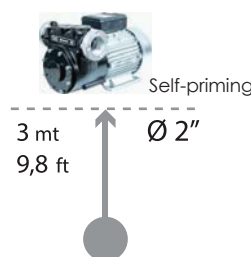
FREE MAX
200
LT/MIN

by/
PASS

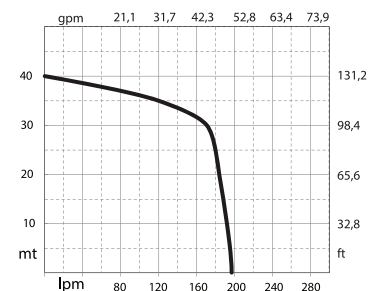
DIMENSION



SUCTION



PERFORMANCE



CODE	Description	FLOW RATE MAX	volts	hp	watt	amp max	RPM	IN	OUT	Weight (kg)	Packing (cm)
TP855-200	Self-priming electric vane pump	200LPM	230	3	2237	12	1400	2" M BSP	2" M BSP	38	45 x 27 x 27