

VENTS

AUS25A

Standard high capacity vent, 2" NPTM with splash tube, 16 PSI.

Options:

- Colour coded low pressure vent.
- 7 PSI.



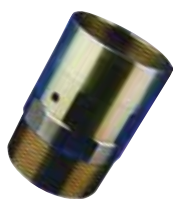
Filtered vent for dust free venting of diesel tanks in extreme conditions.

SWIVELS

Large range of swivels for harsh operating conditions under constant load use.

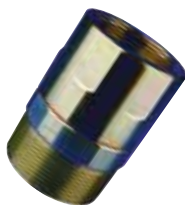
AUS10 - 2" NPT M-F. Zinc steel construction.

AUS8 - 1½" NPT M-F. Zinc steel construction.



AUS9 - 2" NPT-1½" M-F. Zinc steel construction.

AUS50 - 2" NPT M-F. Aluminium anodised construction.



RECEIVERS

Standard Banlaw 2" Fuel receiver with cap to suit BNM800M Banlaw nozzle and other interchangeable brands. 2" NPT.

BRM23K



TANK ACCESSORIES



Filling spouts



Receiver Flush Mount Shell. Weld on or boltable flush mount fitting for safe receiver access.

AUS25R

Low profile railway vent with flexible float case for low profile tanks. Pressure 7 PSI.

Options:

- Hose tail barb to connect hose for vent discharge.
- Extension splash tubes for round top tanks.
- Flange mount to suit Caterpillar or Kamatsu tanks.



BREAKAWAY VALVES

To protect fuel station from massive damage due to accidental drive away when connected.

AUS4W-50



2" BSPT

Code	Description
AUS25A	2" Vent. 16 PSI setting for flat top tanks. Tube length 250mm.
AUS25A-L	2" Vent. 7 PSI setting for flat top tanks. Tube length 220mm.
AUS25A-C	Banlaw Vent Standard with ¾" hose tailed outlet 16 PSI (RED CAP)
AUS25-C	2" Vent. 16 PSI setting for round tanks. Tube length 340mm.
AUS25C-L	2" Vent. 7 PSI setting for round tanks. Tube length 340mm.
AUS25R	2" Vent. 7 PSI setting with flexible vent cage. Tube length 200mm.
AUS4W-50	2" BSPT breakaway valve.
BRM23K	2" NPT Standard Receiver includes cap
AUS8	1½" NPT M-F Zinc steel swivel
AUS9	2" NPT - 1½" NPT M-F Zinc steel swivel
AUS10	2" NPT M-F Zinc steel swivel joint.
AUS50	2" NPT M-F lightweight aluminium swivel

BP64 RECEIVER
Check valve and ball valve not included

BP65 NOZZLE
Manual nozzle and camlock not included



Receiver fitted to typical nozzle installation for bottom loading fuel storage tanks. Fitted with viton seals. Helps to comply with Current Site Practices with refuelling in marine applications to protect our waterways.

Part #	Description	Max. Flow	Size
BP64	Fuel Receiver.	300 LPM.	1¼" NPT.
BP65	Fuel Nozzle.	300 LPM.	1¼" NPT.