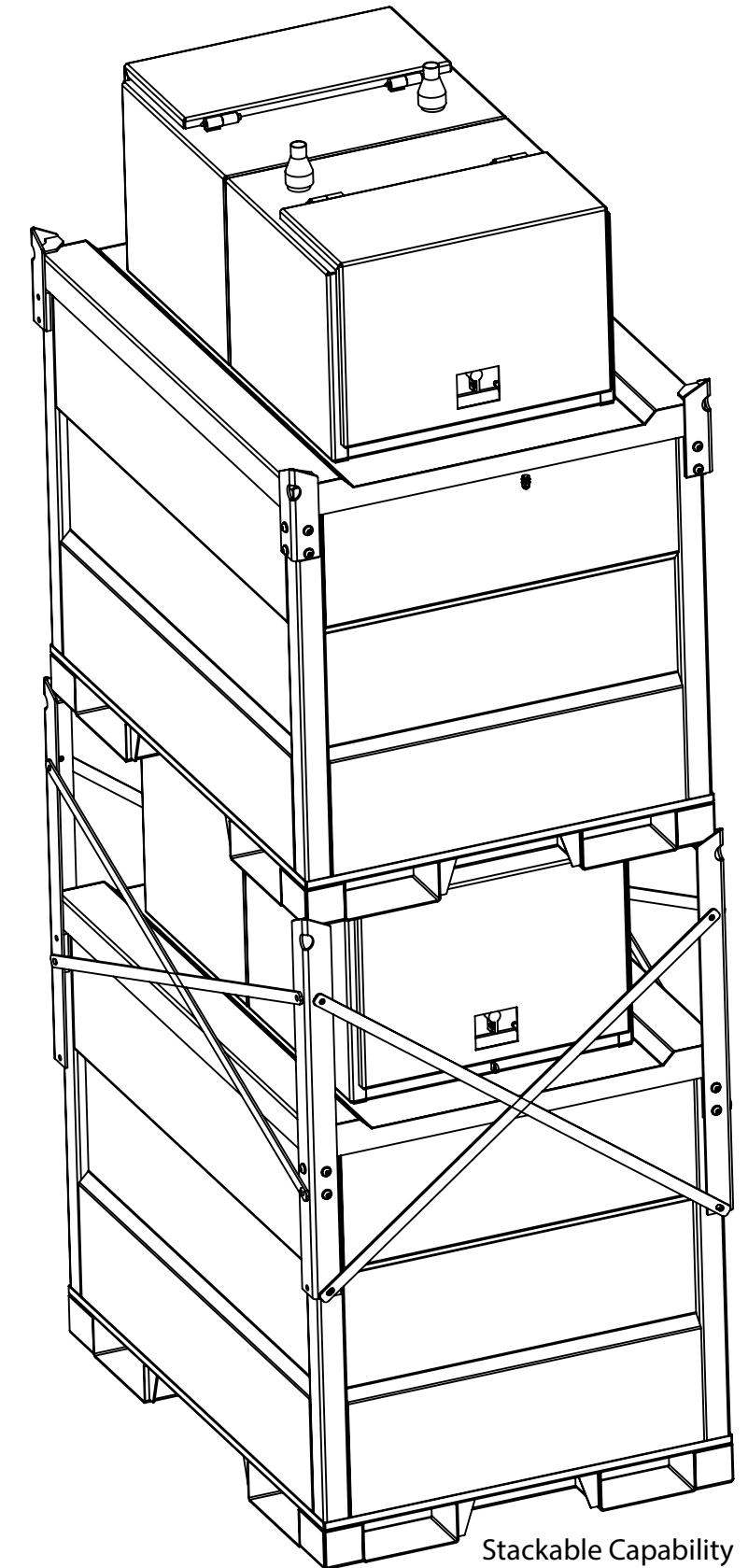


Inner Tank Detail



Stackable Capability

Note:

1. Tolerance Class A by EN-ISO-13920 Class A by EN-ISO-13920
2. Welding finish should be at least CLASS B by EN-ISO-5817
3. Surface preparation for galvanizing according to EN ISO 14713
4. Surface preparation for painting according to EN-ISO 12944
5. According to standard : AS 1692-2006



This drawing is the property of EQUIPCO. Copyright is reserved by them and the drawing issued on the condition that it must not be used for any purpose other than that for which it is supplied and not to be copied, reproduced, retained or disclosed to any unauthorised person either wholly or in part without the consent in writing of EQUIPCO.
24 Tate Drive Kerang VIC 3579 Australia

Material: Material

Weight: 633.73 kg

Finish: As spec.

Revision:

Draw By: MS

Approve By: SF

Part Name

MG800-200

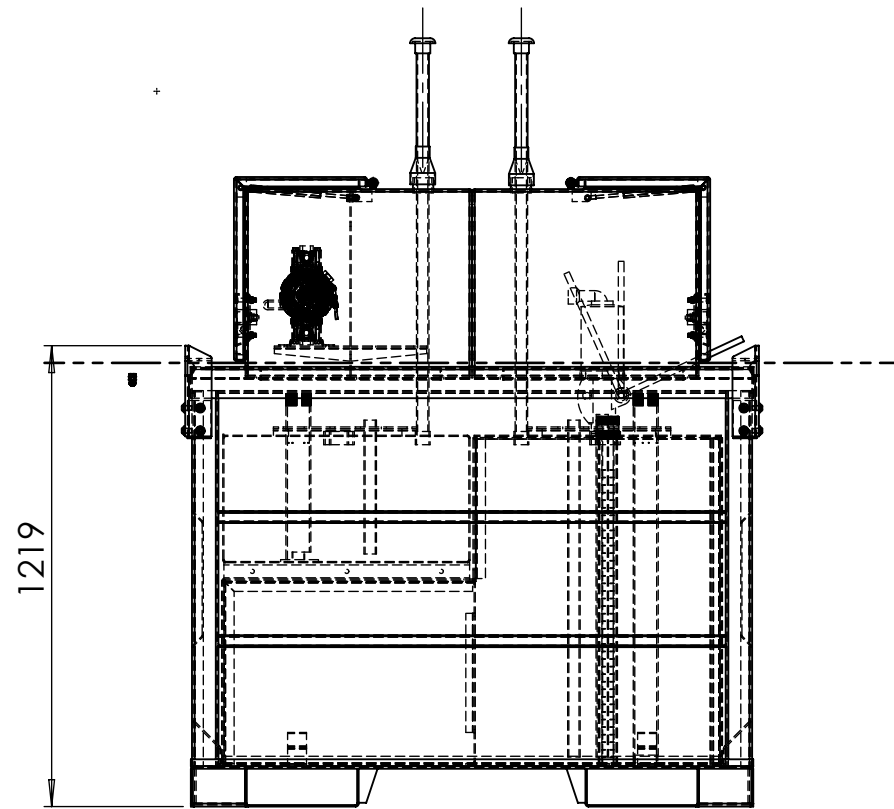
Drawing No

MG800-200

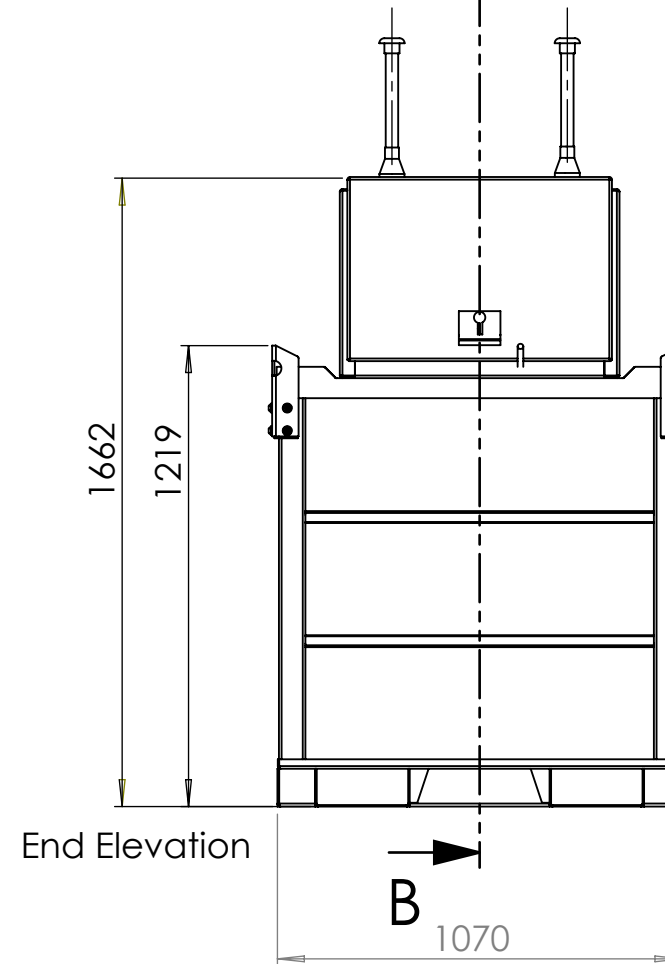
A3

SCALE:1:15

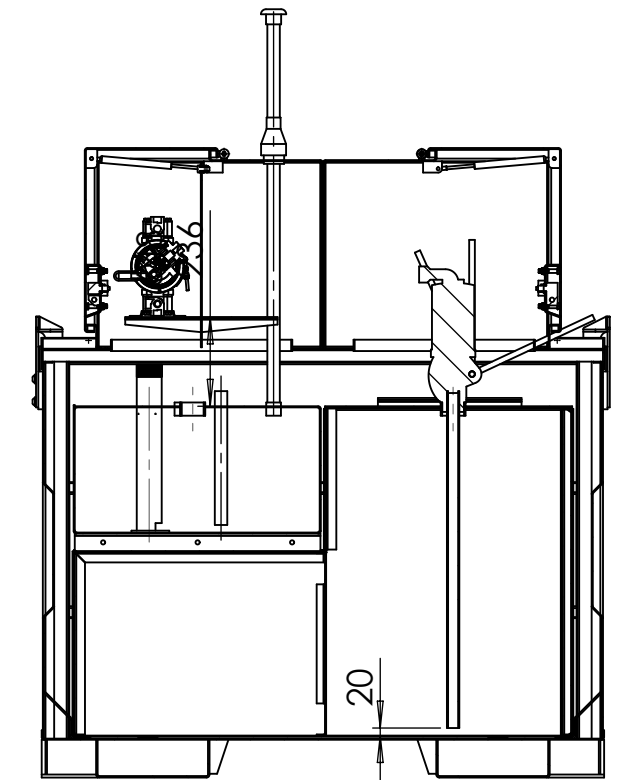
Page 1 of 8



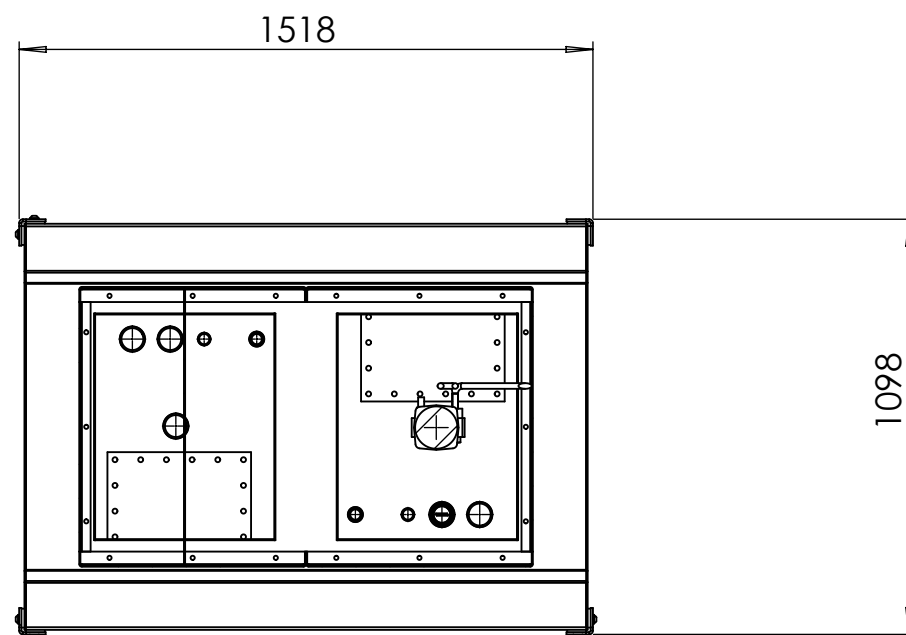
Side Elevation



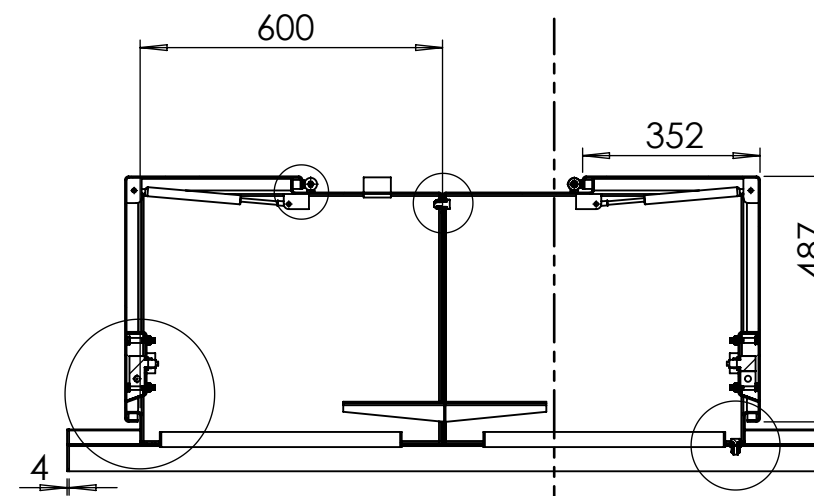
End Elevation



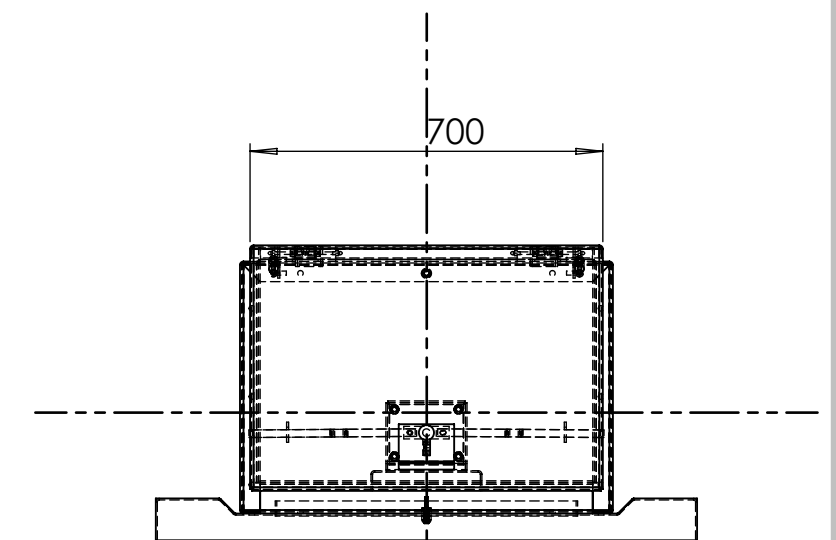
Detail B-B



Plan View



Pump Box Detail



Pump Box Detail

Note:

1. Tolerance Class A by EN-ISO-13920 Class A by EN-ISO-13920
2. Welding finish should be at least CLASS B by EN-ISO-5817
3. Surface preparation for galvanizing according to EN ISO 14713
4. Surface preparation for painting according to EN-ISO 12944
5. According to standard : AS 1692-2006



This drawing is the property of EQUIPCO. Copyright is reserved by them and the drawing issued on the condition that it must not be used for any purpose other than that for which it is supplied and not to be copied, reproduced, retained or disclosed to any unauthorised person either wholly or in part without the consent in writing of EQUIPCO.
24 Tate Drive Kerang VIC 3579 Australia

Weight: 633.73 kg

Finish: As spec.

Revision:

Draw By: MS

Approve By: SF

Part Name

MG800-200

Drawing No

MG800-200

A3

SCALE:1:20

Page 2 of 8